



Welcome Back to School! Here's another way to help Spiritridge!

What Is Scrip?

Scrip is a fundraiser where you purchase gift cards, and Spiritridge receives a portion of that sale. **These are the same gift cards and certificates that you buy at the store.** You can use Scrip gift cards to purchase everyday expenses like food, clothing, and other essentials, and with every purchase, you earn money for Spiritridge.

The beauty of Scrip is that you put your regular household shopping dollars to work. You earn money for our school without spending a single additional penny. The gift cards are purchased at face value, and the company that sells the cards gives a percentage back to Spiritridge. There are gift cards from Scrip that can be used for just about any household purchase including food, clothing, entertainment, gasoline and even dining out. **The list I have included is a partial list; there are many more retailers online at www.shopwithscrip.com that you can choose from.** If there is a store, restaurant, or other retailer that you like to visit, check the list at www.shopwithscrip.com and you will most likely find it.

How do I order?

There are two ways to order:

1. Fill out the attached order form, and return it to school with your check or credit card payment receipt (pay with Credit Card at www.spiritridge.org). Check out the website, www.shopwithscrip.com for even more retailers than are on the order form and you can order those too!
2. Order online at www.shopwithscrip.com. **Use Enrollment code BB9169BF7956.** You have to set up a free family account, and once that is done, you can order from the entire selection online. (Look on the back of this sheet for instructions.) There are three ways to pay with this option: 1. use PrestoPay which takes funds directly from your checking account, or 2. Go to www.spiritridge.org and pay through the website. There is a small credit card fee for this option. Just send in a copy of your receipt with the order form, or 3. Send in a check with a copy of the order from www.shopwithscrip.com to school.
3. When the order comes in, I place your cards in an envelope, and send them home with your student. Other arrangements can be made if necessary. Spiritridge is not responsible for lost cards.

This order is due September 19th. There will be at least 3 more orders this year, including before the Winter holidays, and reloads will be checked weekly.

Please feel free to contact me with questions!

Allison George - Spiritridge Scrip Coordinator
(360) 201-4145
scrip@spiritridge.org



Get Scrip Faster! Order ScripNow!

Have you tried ScripNow® yet? It's the quickest way to get scrip, and it's available from your account on ShopWithScrip.com. With ScripNow eCards, you can purchase and print scrip from home and get shopping in minutes!



Ordering is easy. Log in to your ShopWithScrip® account and follow these steps:

- Browse more than 250 available brands, and select your ScripNow product choice
- Pay with PrestoPay™ to receive your eCard in minutes, or pay your coordinator by check
- Print your ScripNow right from your ShopWithScrip account and redeem it at a store
- Or enter the eCard code for online purchases

Earning scrip rebates has never been easier. Order ScripNow today!



Reduce, Reuse, Reload

Go green and reuse gift cards instead of throwing them away! Use the Reload option on ShopWithScrip.com to add money to gift cards you've already purchased from our scrip program.



Just log in to your ShopWithScrip.com account and follow these simple steps:

- Select the brand of the card you want to Reload
- Register the card by entering the card number
- Name your card to keep track of it for future Reload orders

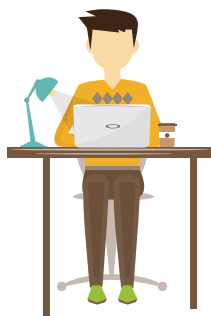
With Reload, you can add any denomination to your card between the listed minimum and maximum. Plus, when you pay for your Reload order with PrestoPay™, your funds will be added to your card overnight*, and ReloadNow® orders will process in minutes. It's so convenient!

Reload is fast, easy, and eco-friendly. Try it today!



Prestopay™ - Online Payment Made Easy

Enroll in PrestoPay, the online payment method offered through ShopWithScrip, and pay for your orders with the electronic funds transfer system. It's easy, it's secure, and it allows you to skip the hassle of paying with cash or checks.



To Sign Up: Simply log on to your ShopWithScrip account and follow these steps:

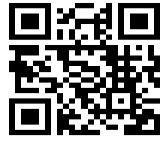
- Click on the PrestoPay link under Family Functions on your Dashboard
- Enter your bank account information on our secure website
- Your account and routing numbers will be validated instantly
- You'll be ready to order immediately using PrestoPay

For a small convenience fee of only \$0.15 per order, you'll have the quickest and easiest way to pay for scrip!



Scrip Family Order Form

Spritridge Elementary PTSA



Cards are considered shipped when ordered. By placing this order, I give permission to release my cards to my child, or make other arrangements. I will not hold Spiritridge responsible for lost, stolen or misplaced cards. Payment or proof of payment must accompany order form.

Name			Order Date		
Check #	Pay Online?	Email			
Student Name			Teacher Name		Total Paid

Clothing & Accessories				Department Store			
Product	%	QTY	Total	Product	%	QTY	Total
aerie \$25.00	10%		\$	jcpenny \$100.00	5%		\$
American Eagle Outfitters \$25.00	10%		\$	jcpenny \$25.00	5%		\$
Athleta \$25.00	14%		\$	Kohl's \$25.00	4%		\$
Banana Republic \$25.00	14%		\$	Macy's \$25.00	10%		\$
Brooks Brothers \$25.00	16%		\$	Sears \$100.00	4%		\$
Champs Sports \$25.00	9%		\$	Sears \$25.00	4%		\$
Children's Place \$25.00	12%		\$	Sears \$250.00	4%		\$
Claire's \$10.00	9%		\$	Dining - Casual			
Crazy 8 \$25.00	13%		\$	Product	%	QTY	Total
DressBarn \$25	8%		\$	Applebee's \$25.00	8%		\$
Express \$25.00	10%		\$	Bahama Breeze \$25.00	9%		\$
Famous Footwear \$25.00	8%		\$	Baja Fresh \$25.00	7%		\$
Finish Line \$25.00	10%		\$	Bonfish Grill \$25.00	8%		\$
Foot Locker \$25.00	9%		\$	Buca di Beppo \$25.00	8%		\$
Gap \$25.00	14%		\$	Buffalo Wild Wings \$10	8%		\$
Gymboree \$25.00	13%		\$	Calif. Pizza Kitchen \$25	8%		\$
HomeGoods \$25.00	7%		\$	Cheesecake Factory \$25	5%		\$
Icing \$10.00	9%		\$	Claim Jumper \$25.00	9%		\$
J. Crew \$25.00	13%		\$	Darden Restaurants \$25	9%		\$
Journeys \$25.00	10%		\$	Dave & Busters \$25	13%		\$
L.L.Bean \$25.00	16%		\$	Denny's \$10.00	7%		\$
Lands' End \$25.00	16%		\$	IHOP \$25.00	8%		\$
Lane Bryant \$25.00	8%		\$	Landry's, Inc. \$25.00	9%		\$
Limited \$25.00	9%		\$	LongHorn Steak \$25	9%		\$
Marshalls \$25.00	7%		\$	Maggiano's \$25.00	11%		\$
Men's Wearhouse \$25.00	8%		\$				\$
Neiman Marcus \$50	12%		\$	Olive Garden ® \$25.00	9%		\$
Nordstrom \$25	6%		\$	Outback \$25.00	8%		\$
Nordstrom Rack \$25	6%		\$	Panda Express \$25.00	8%		\$
Old Navy \$25.00	14%		\$	Red Lobster ® \$25.00	9%		\$
Payless Shoes \$20.00	13%		\$	Red Robin \$25.00	9%		\$
Ross Dress for Less \$25.00	8%		\$	Rock Bottom Restaurant \$25.00	6%		\$
T.J. Maxx \$25.00	7%		\$				\$
Talbots \$25.00	13%		\$	Electronics & Office			
Dining - Fine				Product	%	QTY	Total
Product	%	QTY	Total	Office Depot \$25.00	5%		\$
P.F. Chang's China Bistro \$25.00	8%		\$	Office Max \$25.00	5%		\$
Ruth's Chris Steak House \$50.00	10%			Staples \$100.00	5%		\$
Dining - On The Go				Staples \$25.00	5%		\$
Product	%	QTY	Total	Entertainment			
Arby's \$10.00	8%		\$	Product	%	QTY	Total
Burger King \$10.00	4%		\$	Fandango \$25	4%		

Chipotle Mexican Grill \$10.00	10%		\$	AMC Theatres \$25.00	8%		\$
Cold Stone Creamery \$10.00	8%		\$	Barnes & Noble \$10.00	9%		\$
Dairy Queen \$10.00	3%		\$	Barnes & Noble \$25.00	9%		\$
Domino's \$10.00	8%		\$	Cinemark \$25.00	4%		\$
Great Harvest Bread \$10.00	6%		\$	Cineplex Odeon \$25.00	8%		\$
Jack in the Box \$10.00	4%		\$	Loews Cineplex \$25.00	8%		\$
KFC \$5.00	8%		\$	Regal Entertainment Group \$25.00	8%		\$
Little Caesar's Pizza \$20.00	8%		\$	United Artist Theatres \$25.00	8%		\$
Panera Bread \$10.00	8%		\$	Gas & Auto			
Panera Bread \$25.00	8%		\$	Product	%	QTY	Total
Papa John's Pizza \$10.00	8%		\$	ARCO \$100.00	1.5%		\$
Papa Murphy's Pizza \$10.00	8%		\$	ARCO \$50.00	1.5%		\$
Peet's Coffee & Tea \$20.00	8%		\$	AutoZone \$25.00	8%		\$
Pizza Hut (Not AK or HI) \$10.00	8%		\$	BP \$100.00	1.5%		\$
Qdoba Mexican Grill \$25.00	7%		\$	BP \$50.00	1.5%		\$
Starbucks \$10.00	7%		\$	Chevron \$100.00	1.5%		\$
Starbucks \$25.00	7%		\$	Chevron \$50.00	1.5%		\$
SUBWAY® Restaurants \$10.00	6%		\$	Exxon \$50.00	1%		\$
Taco Bell \$10.00	5%		\$	Jiffy Lube \$30.00	8%		\$
Wendy's \$10.00	4%		\$	Mobil \$50.00	1%		\$
Krispy Kreme \$10	8%		\$	Shell \$100.00	2%		\$
Discount Store				Shell \$25.00	2%		\$
Product	%	QTY	Total	Texaco \$100.00	1.5%		\$
HomeGoods \$25.00	7%		\$	Texaco \$50.00	1.5%		\$
Sam's Club \$100.00	2.5		\$	Grocery			
Sam's Club \$25.00	2.5		\$	Product	%	QTY	Total
Target \$100.00	2.5		\$	Albertsons \$100.00	4%		\$
Target \$25.00	2.5		\$	Albertsons \$25.00	4%		\$
Target \$50.00	2.5		\$				\$
Walmart \$100.00	2.5		\$	Safeway \$100.00	4%		\$
Walmart \$25.00	2.5			Safeway \$25.00	4%		\$
				Whole Foods Market \$25.00	3%		\$
Electronics & Office				Home Decor			
Product	%	QTY	Total	Product	%	QTY	Total
Best Buy® \$100.00	4%		\$	Bed Bath & Beyond \$25	7%		\$
Best Buy® \$25.00	4%		\$	Crate and Barrel \$100.00	8%		\$
GameStop \$25.00	3%		\$	Crate and Barrel \$25.00	8%		\$
Home Decor				Specialty Retailer			
Product	%	QTY	Total	Product	%	QTY	Total
Land of Nod \$25.00	8%		\$	American Girl \$100.00	9%		\$
PBteen \$100.00	8%		\$	American Girl \$25.00	9%		\$
PBteen \$25.00	8%		\$	Audible.com Membership \$45	8%		\$
Pier 1 Imports \$25.00	9%		\$	Bath & Body Works \$10	13%		\$
Pottery Barn \$100.00	8%		\$	Bath & Body Works \$25	13%		\$
Pottery Barn \$25.00	8%		\$	Build-A-Bear \$25	8%		\$
Pottery Barn Kids \$100.00	8%		\$	Container Store \$25.00	9%		\$
Pottery Barn Kids \$25.00	8%		\$	CVS/pharmacy \$25.00	6%		\$
West Elm \$25.00	8%		\$	GNC \$25.00	8%		\$
Williams-Sonoma \$100.00	8%		\$	Hallmark \$25.00	4%		\$
Williams-Sonoma \$25.00	8%		\$	Honey Baked Ham \$25	12%		\$
Home Improvement				Jo-Ann Fabric \$25.00	6%		\$
Product	%	QTY	Total	Michaels \$25.00	4%		\$
Ace Hardware \$25.00	4%		\$	Oriental Trading \$25	9%		\$

Lowe's \$100.00	4%		\$	PetSmart \$25.00	4%		\$
Lowe's \$20.00	4%		\$	Rite Aid \$25.00	4%		\$
Lowe's \$25.00	4%		\$	See's Candies \$25.00	9%		\$
The Home Depot \$100.00	4%		\$	Sephora \$20.00	5%		\$
The Home Depot \$25.00	4%		\$	Sunglass Hut \$25.00	12%		\$
The Home Depot \$500.00	4%		\$	Tanger Outlets \$25.00	8%		\$
Online & Catalog							\$
Product	%	QTY	Total	ULTA \$25.00	4%		\$
Amazon.com \$100.00	3%		\$	Walgreens \$25.00	6%		\$
Amazon.com \$25.00	3%		\$	Sporting Goods			
Groupon.com \$25.00	7%		\$	Product	%	QTY	Total
iTunes@ \$15.00	5%		\$	Big 5 Sporting Goods \$25.00	8%		\$
iTunes@ \$25.00	5%		\$	Cabela's \$25.00	11%		\$
Nike \$25.00	12%		\$	Dick's Sporting Goods \$25.00	8%		\$
Omaha Steaks \$25.00	11%		\$	REI \$25.00	8%		\$
Shutterfly \$25.00	9%		\$				\$
Zappos.com \$25.00	8%		\$	Travel			
Service				Product	%	QTY	Total
Product	%	QTY	Total	Disney \$25.00	2%		\$
Great Clips \$25	8%		\$	Disney \$100.00	2%		\$
HairMasters \$25.00	8%		\$	Write In (from www.shopwithscrip.com)			
MasterCuts \$25.00	8%		\$	Product	%	QTY	Total
Regis Salons \$25.00	8%		\$				\$
Supercuts \$25.00	8%		\$				\$